

SOP4: Campus Guidelines

Our enhanced building access protocol



Temperature screenings will be conducted at the main gate



A self-declaration of medical fitness is mandatory for re-entry

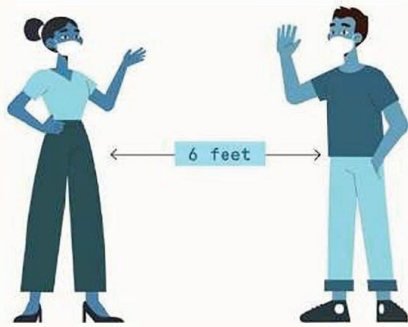


No pet, no visitor policy to be followed temporarily

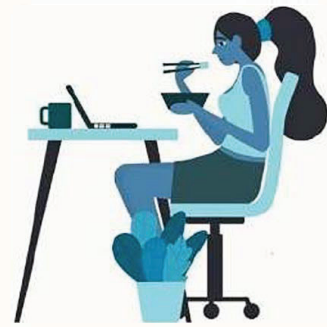


Food and package delivery will be restricted to the main gate

Social Distancing in Our Classroom



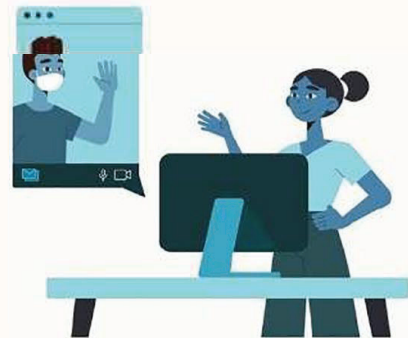
Maintain a minimum distance of 6 ft from others



Avoid common areas and eat lunch at your desks



Use the staircase and avoid elevators wherever possible



Replace all in-person meetings with virtual ones

We're ready to welcome you back



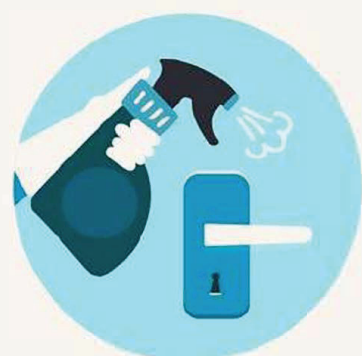
A pre-opening ULV sanitisation treatment has been conducted



Hand sanitisers have been installed in all common areas



Our buildings will be disinfected regularly



Frequently touched surfaces will be cleaned every 30 mins